

# SAFETY ALERT

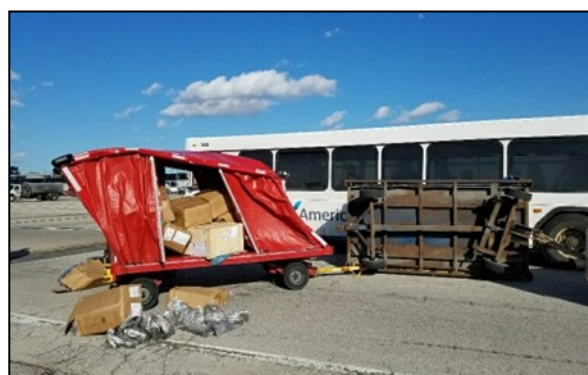
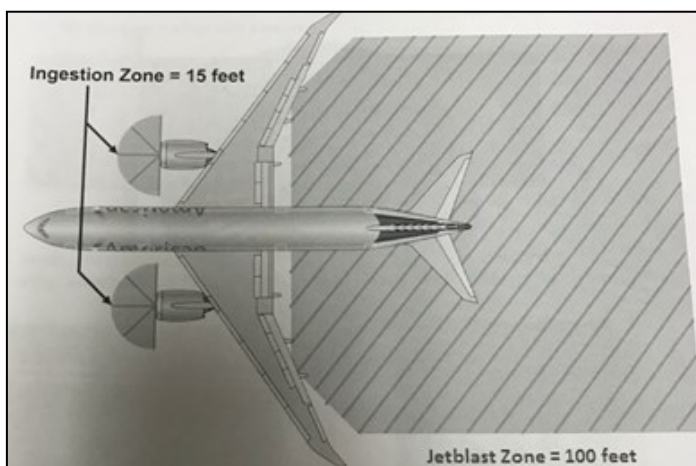
NUMBERS: SA18-02

STATION: ORD

INCIDENT DATE: FEB. 26, 2018

## Be Aware of Jet Blast!

On 2/25/2018, an American Airlines employee bus and carts from an American Airlines air freight vehicle made impact on the service road at the end of G concourse resulting in multiple injuries. Video surveillance shows jetblast from a 777 overturning carts over to the lane the bus was driving on as it was exiting the alpha taxiway to the bravo taxiway.



**NOTE: All employees who operate motor vehicles on service roads in the vicinity of warmup or holding aprons, particularly when crossing taxiways behind jet aircraft, should exercise extreme caution in avoiding the potential hazard caused by aircraft jet blast.**



### WHERE CAN I READ MORE?

The Jet blast zone as defined by American Airlines is 100 feet for each aircraft when the engines are at idle. When more throttle is applied to the engines, the jet blast zone increases up to 2100 feet for engines at full throttle. – Ramp Initial Participation Guide

March 7, 2018

*Safety Alerts are a publication of American Airlines Corporate Safety.*

*For questions or comments, please contact your Hub or Regional Corporate Safety Manager.*